

CirQ Hale

Reducing healthcare costs and improving operational efficiency through **employee health and respiration safety management**

CirQ Technologies has developed **Hale**, a proprietary breath biomarker sensor technology and artificial intelligence which combine to form a health monitoring and real-time respiration safety compliance platform.

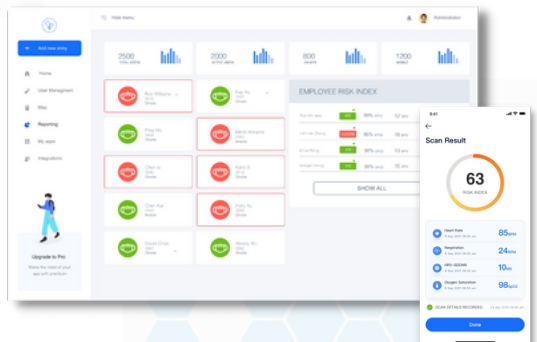
A quick, **mobile face scan assesses employees' health condition and general fitness for work via vitals sign detection**. The smart-material sensor attached to a protective mask captures breath- biomarkers, mask fit, and internal mask pressure changes while breathing; raw data is transmitted with Bluetooth technology to an **in-app AI model to analyze respiration data and mask fit anomalies**. User risk index data is sent to the management dashboard to monitor individual respiration compliance protocols in real-time.



THE FUTURE OF RESPIRATION MONITORING AND RISK PREDICTION

MANAGEMENT DASHBOARD

- Monitors breathing rate
- Active mask-fit analysis
- CO₂ build-up
- MASK USAGE ANALYTICS
- VITAL MONITORING SPO2 / HRV / BPM
- ANDROID, iOS, Watch OS, & App integration



FIRSTMOVE

www.firstmove-ltd.com
firstmoveltd@gmail.com

HALESENSOR.COM
CIRQTECHNOLOGIES.COM